

# ATS GRANDSTAND

## SECTOR-99A, GURUGRAM





# SITE LOCATION

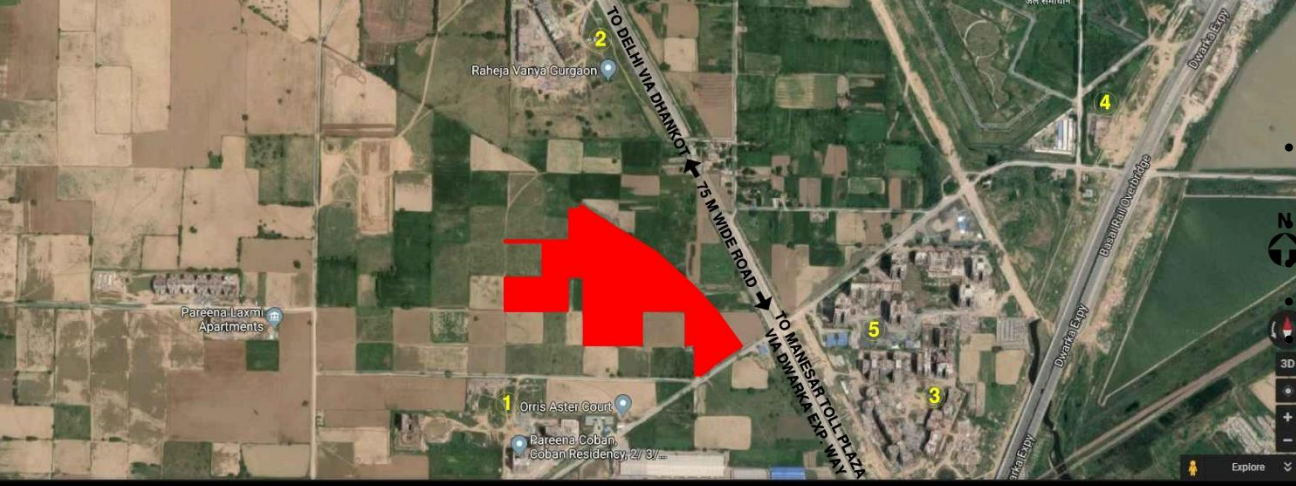
**Location** : Sector-99A,  
Gurgaon

**Site Area** : 12.58 Acres

**No. of Flats** : 928 Approx

**Built-Up Area** : 23 lac Sq.Ft. Approx

**Saleable Area** : 17.77 lac Sq. Ft.





# SITE PLAN



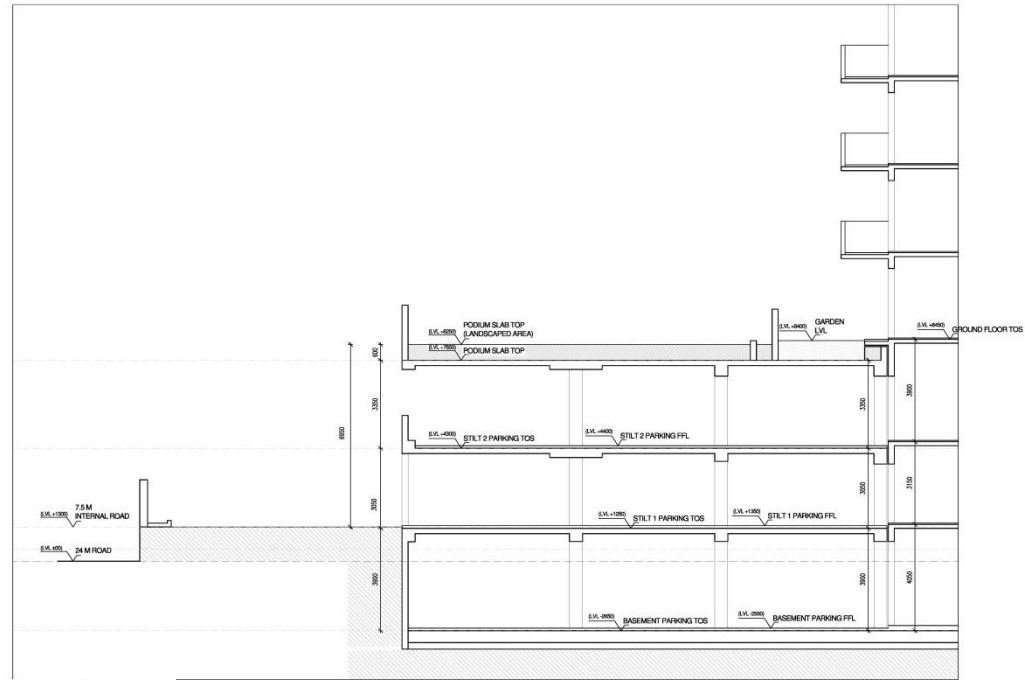
## DISCLAIMER

THIS LAYOUT IS AN ARTISTIC REPRESENTATION AND IS FOR REFERENCE ONLY. ACTUAL LAYOUT WILL CHANGE AT THE TIME OF FINAL APPROVAL. ARCHITECT RESERVES THE RIGHT TO CHANGE THE LAYOUT DURING WORKING PROCESS.

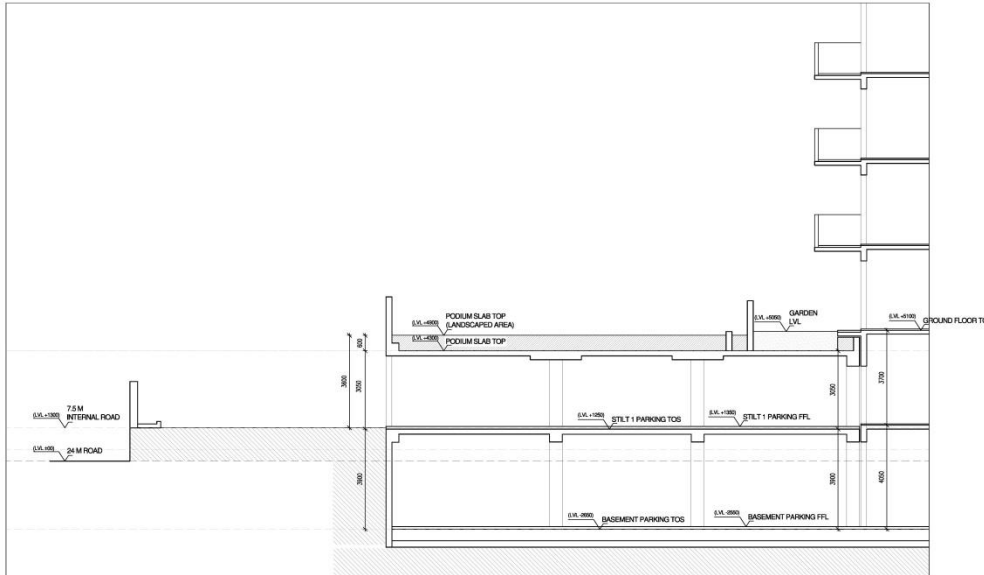
# ATS GRANDSTAND, SECTOR- 99A, GURUGRAM

# PROJECT DETAILS

- No. of Towers : 9
- A Type -1 Nos. ( B + 2S + 34), Height: 118.4 Mts
- B Type - 3 Nos. ( B + 2S + 34)/ ( B + S + 34), Height: 118.4 Mts
- CD Type- 4 Nos. ( B + 2S + 34), Height: 118.4 Mts
- C Type- 1 Nos. ( B + S + 34), Height: 115.7 Mts
  
- A Type: Size 2850 Sq. Ft.
- B Type: Size 2350 Sq. Ft.
- C type: Size 1750 Sq. Ft.
- D Type: Size 1550 Sq. Ft.
  
- Basement: 1 Level (27133 sq.m.)
- Stilt Parking: 2 Levels (17625 sq.m. + 13852 sq.m.)
- Parking: 1860 Cars ( Basement + Stilt + Surface)



**SCHEMATIC SECTION (DOUBLE STILT)  
FOR TOWER NO. 2,3,4,5,6,7 & 8**



**SCHEMATIC SECTION (SINGLE STILT)**

**FOR TOWER NO. 9 & 10**

**Note:**

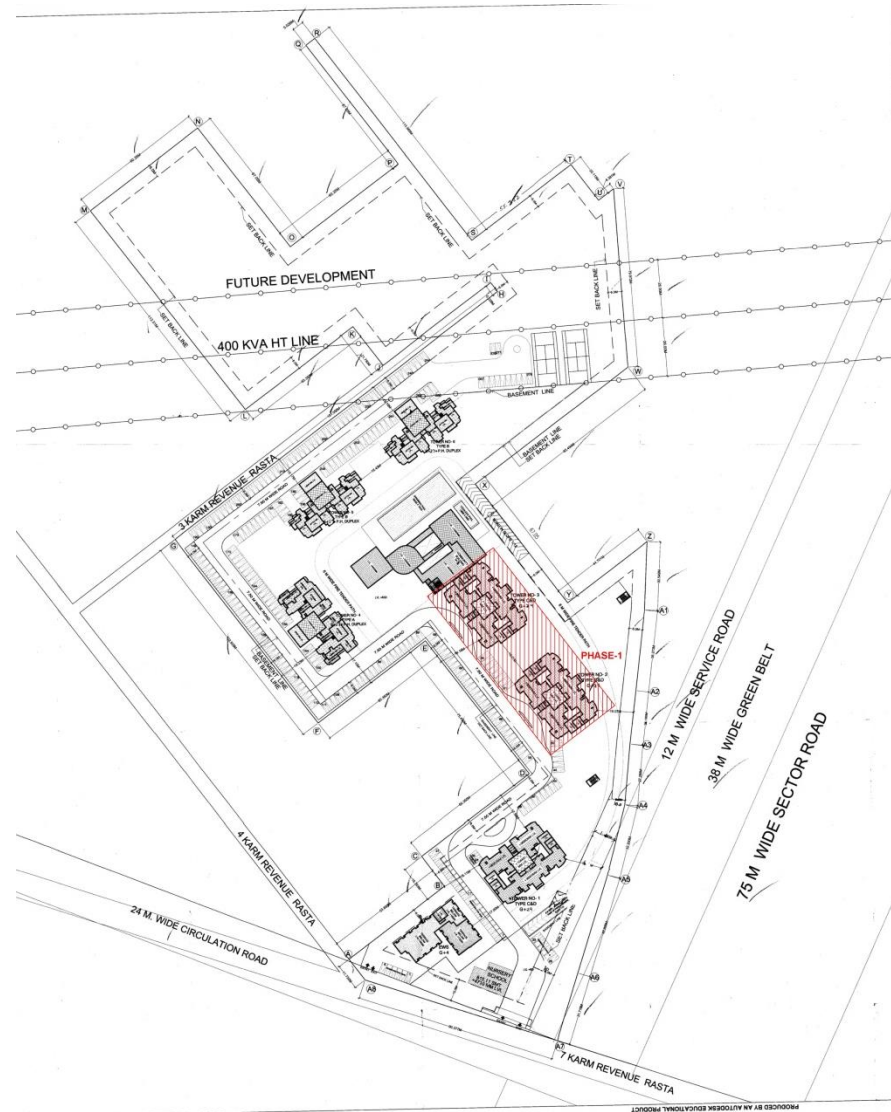
1. All Figures Are Tentative & May vary at The Time of Approval
2. Number of floors have been written omitting 13<sup>th</sup> physical floor.





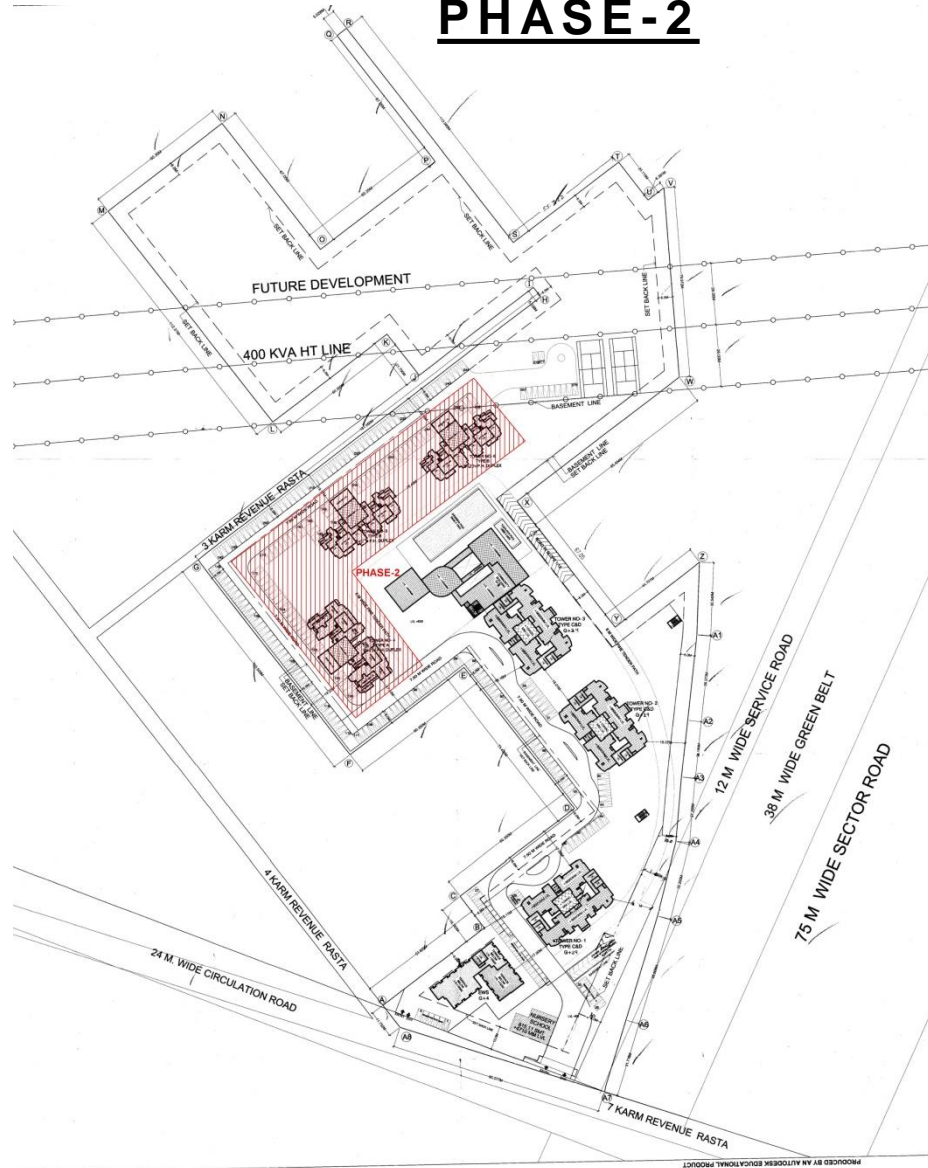
# RERA SUBMISSION FOR PHASE-1 & PHASE-2

## PHASE-1



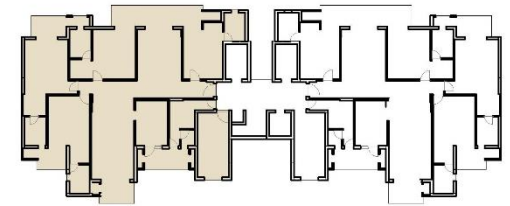
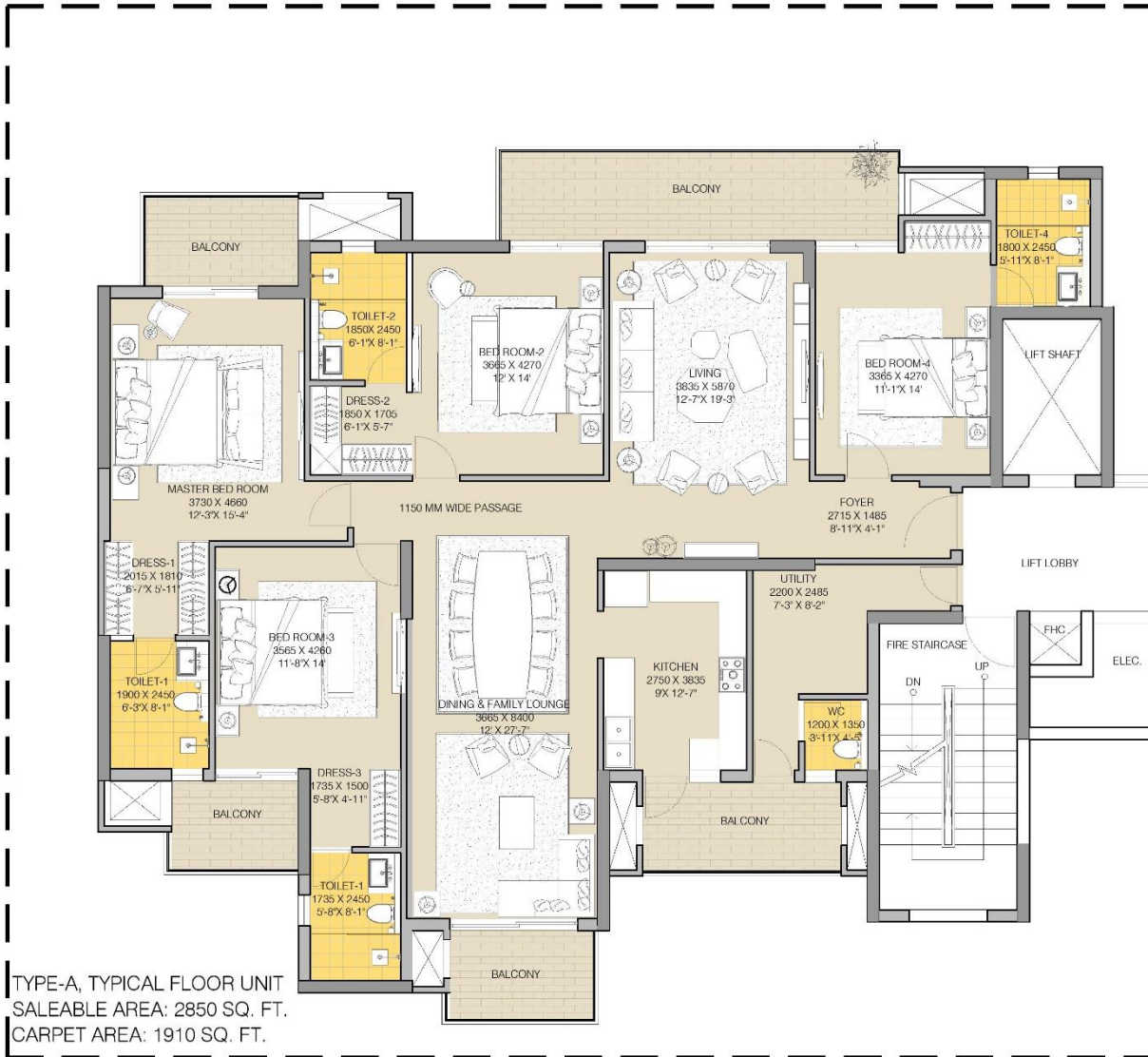
Towers 2 & 3 For Phase-1

## PHASE-2



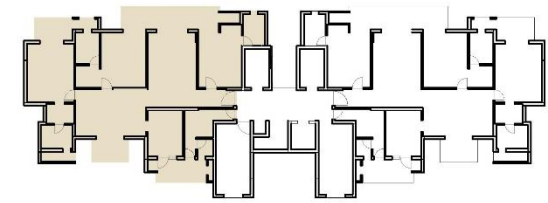
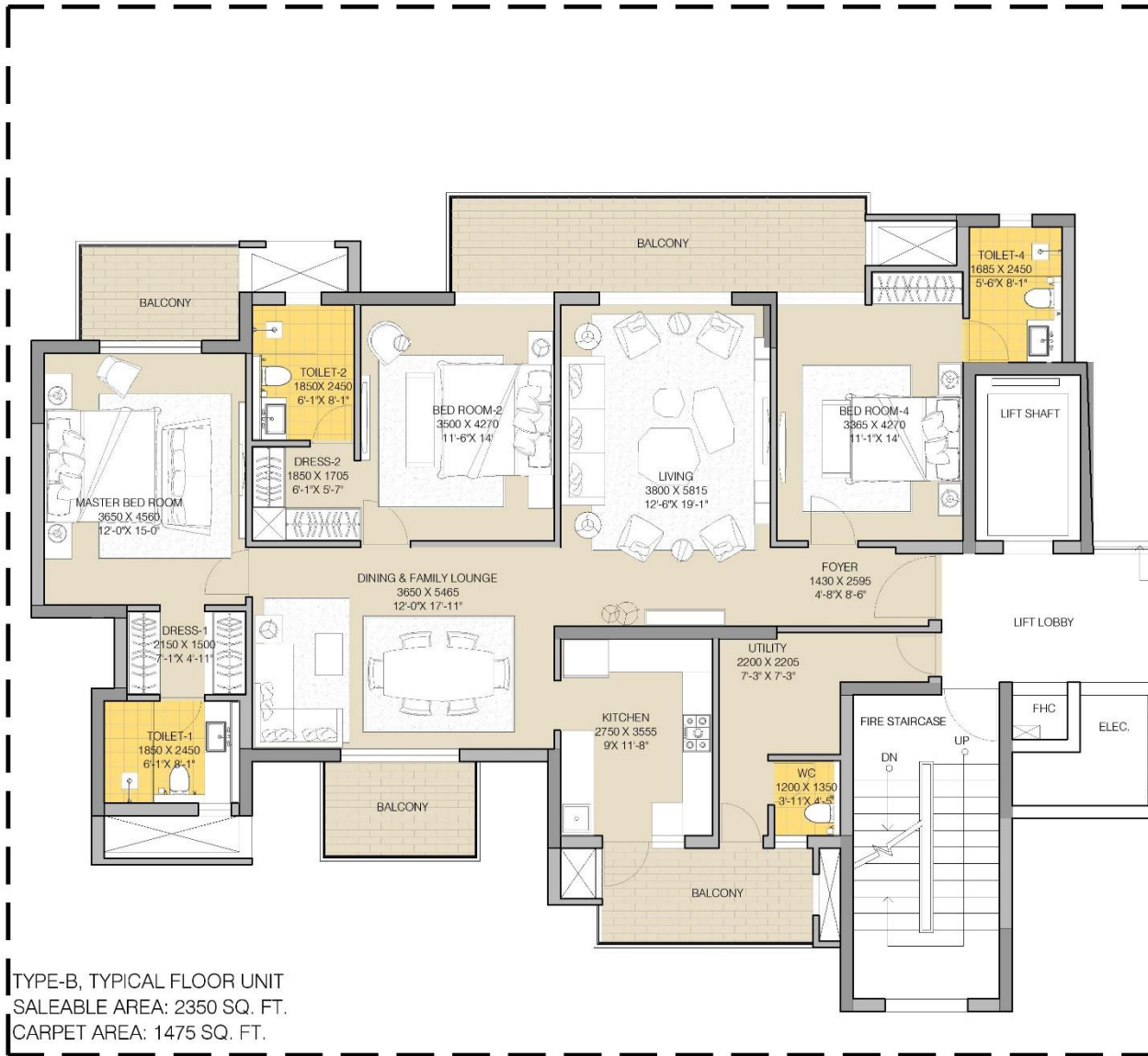
Towers 4,5 & 6 For Phase-2

# TYPE-A. TYPICAL FLOOR UNIT



TYPE-A TOWER  
KEY PLAN

# TYPE-B. TYPICAL FLOOR UNIT

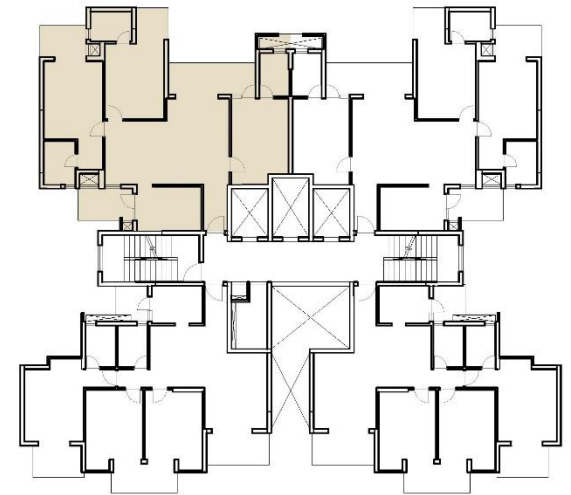
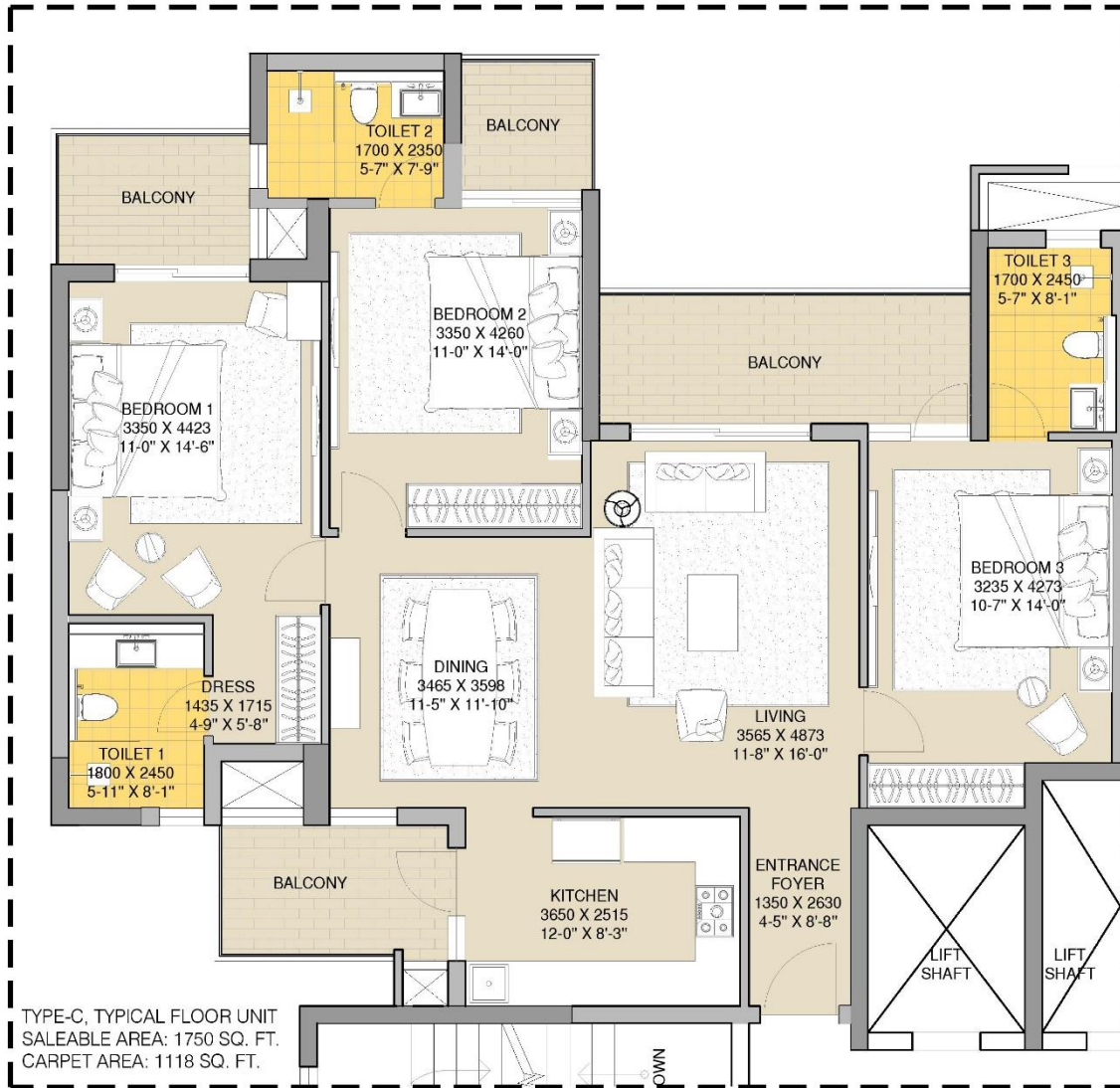


TYPE-B TOWER  
KEY PLAN

TYPE-B, TYPICAL FLOOR UNIT  
SALEABLE AREA: 2350 SQ. FT.  
CARPET AREA: 1475 SQ. FT.

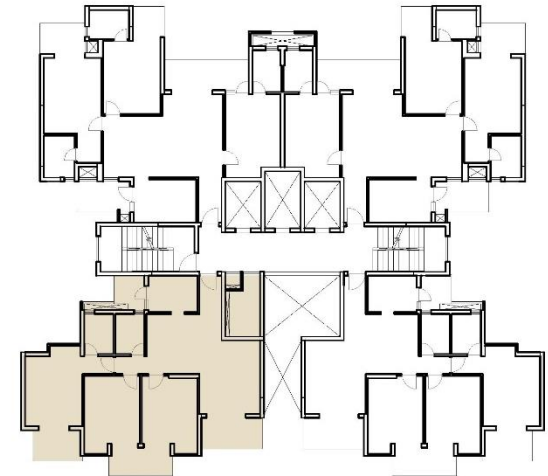
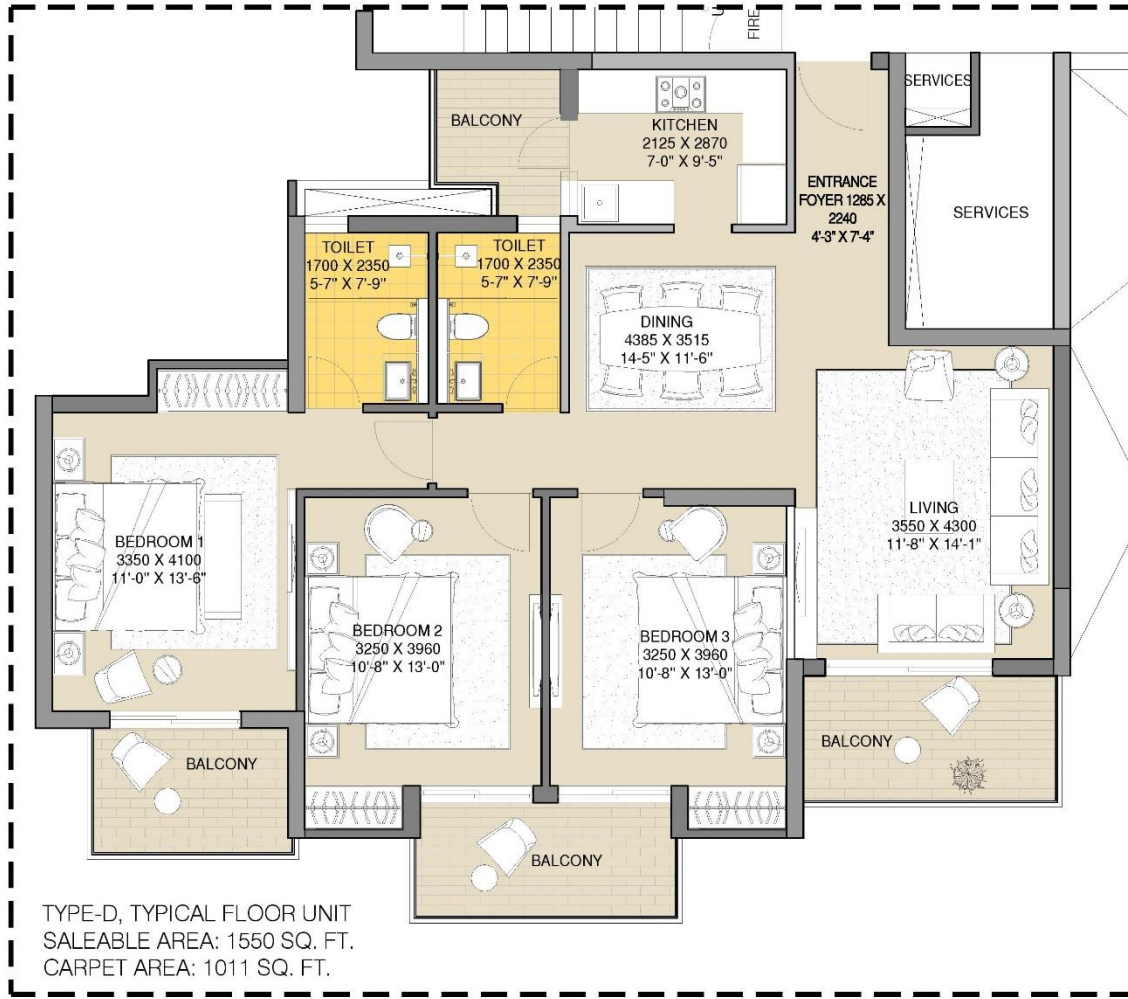


# TOWER-CD, TYPE-C. TYPICAL FLOOR UNIT



TYPE-CD TOWER  
KEY PLAN

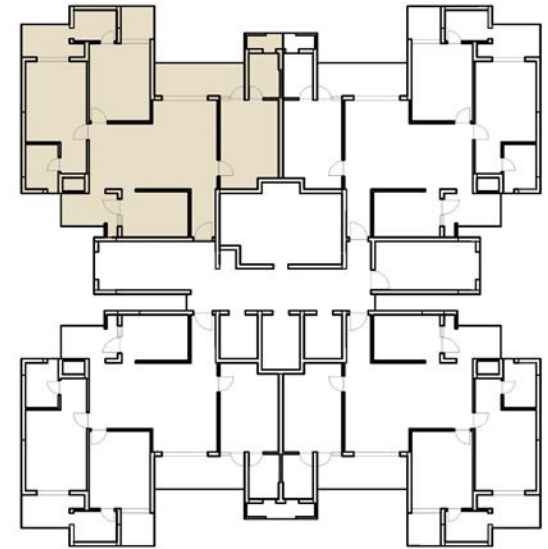
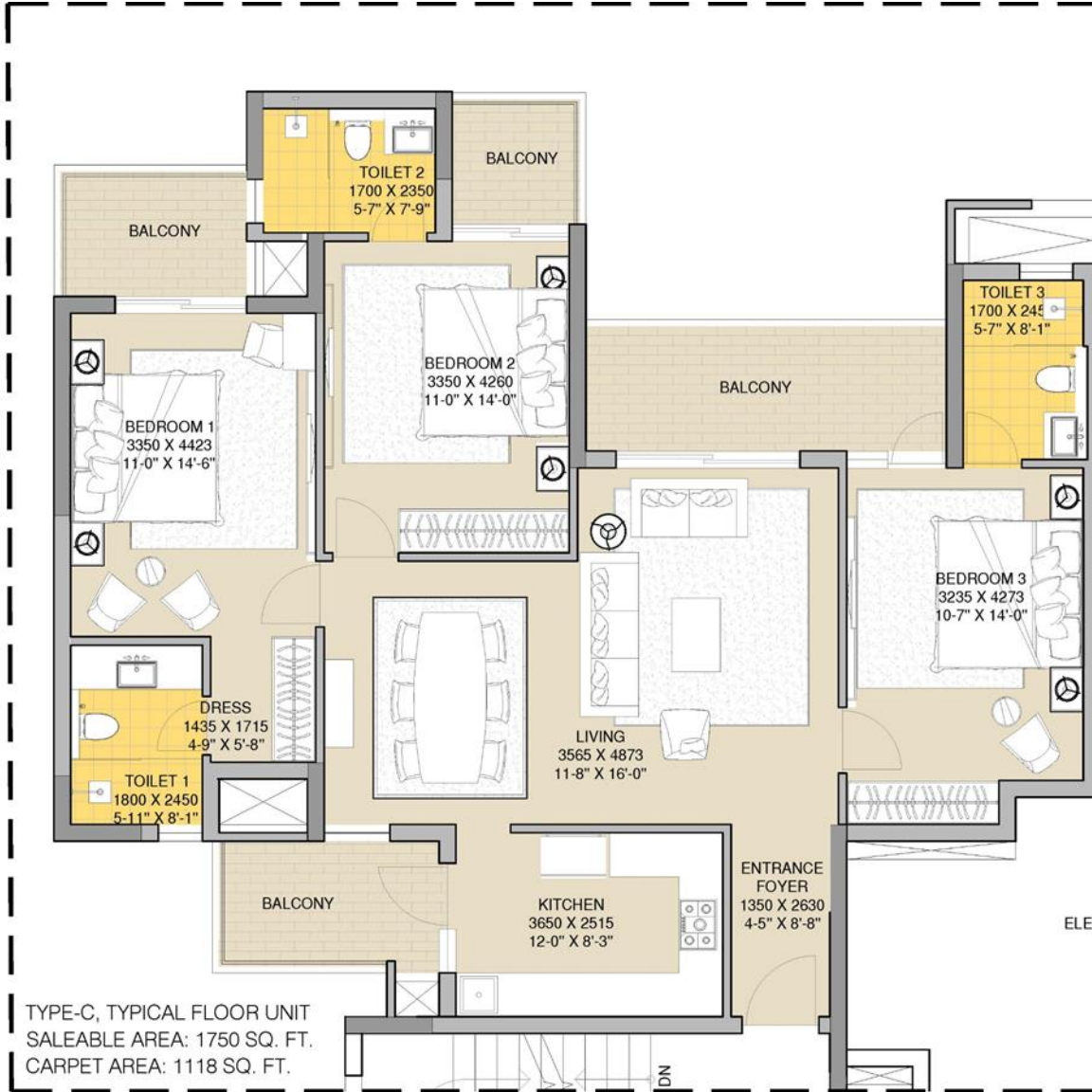
# TOWER-CD, TYPE-D. TYPICAL FLOOR UNIT



TYPE-CD TOWER  
KEY PLAN



# TOWER-C, TYPICAL FLOOR UNIT



TYPE-C TOWER  
KEY PLAN

